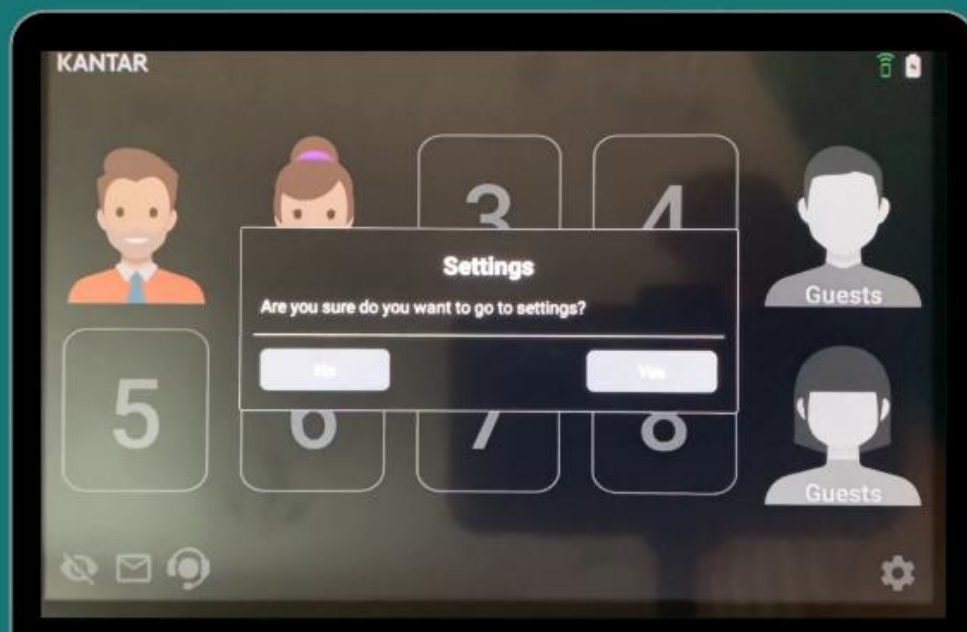




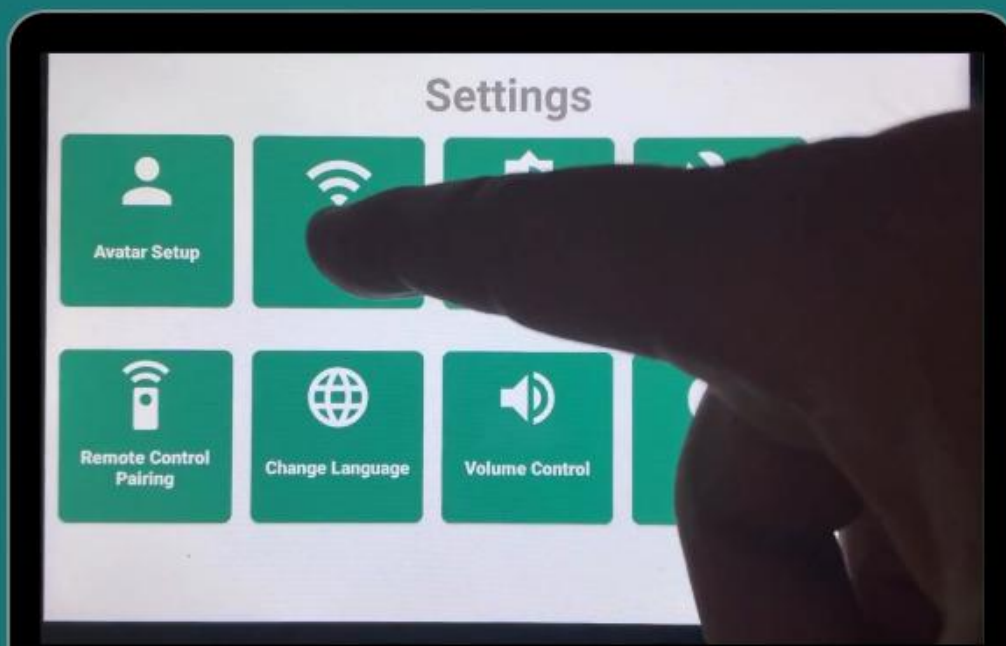
**Reconnecting the  
TV Meter to Wi-Fi**

**If you've switched up your  
internet provider or router,  
let's get that TV Meter back  
in action with these quick  
and simple steps!**

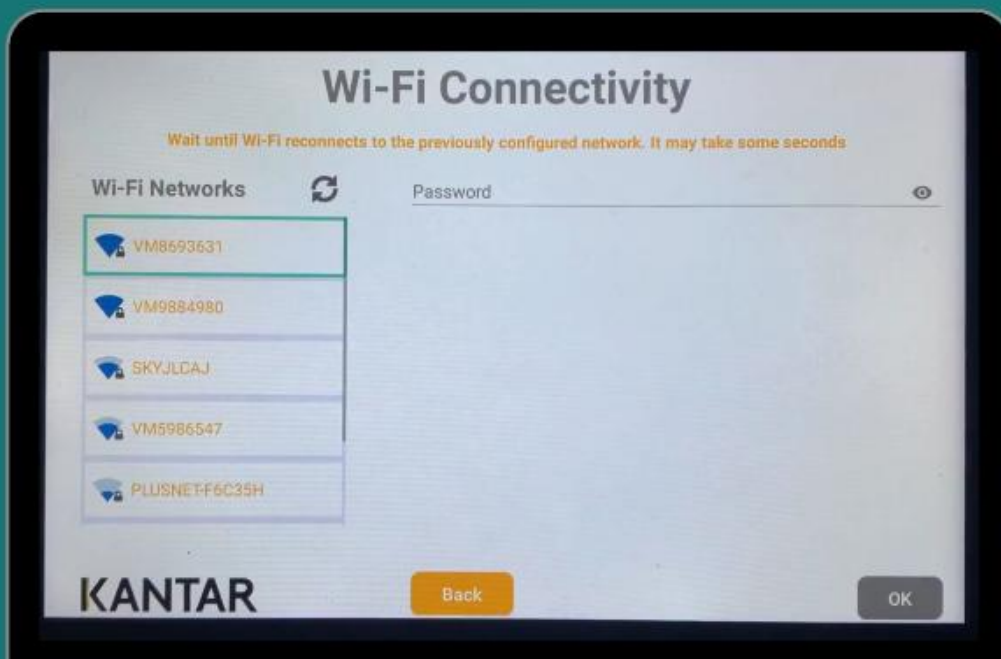
**Step 1:**  
Click **settings** ⚙️ in the  
bottom right of the TV  
Meter press **Yes** to enter the  
settings menu



## Step 2: Press **Wi-Fi** in the Settings Menu



**Step 3:**  
**On the Wi-Fi Connectivity**  
**page** **select** your new **router**  
**and** **enter** the router **Wi-Fi**  
**password**



**Step 4:**  
Click on the  on the  
keyboard then press **OK**

